

Quick Exhaust Valve



Ordering code

QE - **01**

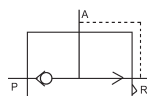
Series

QE: Quick exhaust valve

Port size

01: G1/8" 02: G1/4" 03: G3/8"
04: G1/2" 06: G3/4"

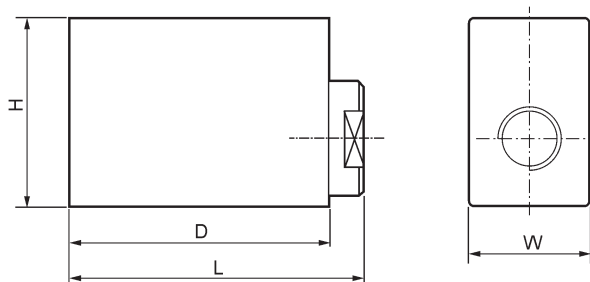
Symbol



Specifications

Model	QE-01	QE-02	QE-03	QE-04	QE-06
Fluid	Air				
Effective area	16mm ²	27.5mm ²	28mm ²	71mm ²	72.5mm ²
Port size	G1/8"	G1/4"	G3/8"	G1/2"	G3/4"
Operating pressure	0~0.8MPa				
Operating temperature	0~60℃				

Dimensions



Model / Symbol	Bore	L	W	H	D
QE-01	G1/8	39	18	27	35
QE-02	G1/4	54	28	36	50
QE-03	G3/8	54	28	36	50
QE-04	G1/2	66	28	36	50